



in this issue... **Staff Survey** Local charities benefit... **Olympics Minister** Tessa Jowell praises Loughborough...
Working Late Research into ageing workforce... **Shaw Thing** Loughborough trio win cricket World Cup...

RAE funding success

Loughborough is to receive an additional £5.97million (36.93%) of research funding according to the announcement made on 5 March by HEFCE (the Higher Education Funding Council for England).

This increase is the fifth largest in the UK and the greatest increase of any UK university without a medical school. It is also more than double that of Cambridge University. It follows Loughborough's outstanding results in the 2008 Research Assessment Exercise (RAE) and puts Loughborough firmly among the very top of the country's research universities.

The announcement details how a total of £1,460million of funding for research will be distributed among the country's higher education institutions. This money supports the research infrastructure, including the salaries of permanent academic staff, premises, libraries and central computing costs. The funding is allocated according to research excellence. In the 2008 RAE, every department at Loughborough was found to be undertaking research that is internationally excellent, with 18% of the University's research considered to be 'world leading'.

"This announcement is absolutely tremendous news," said Vice Chancellor Professor Shirley Pearce. "Such a significant increase gives Loughborough a wonderful opportunity and we will use this to strengthen our already internationally-renowned excellence in research.

"This research income is part of the overall HEFCE allocation to universities. The full allocation includes resource for teaching and enterprise. We are currently analysing Loughborough's overall package for this year before determining how best to invest in order to build on this research success."

The top ten universities in terms of increased funding are:

University of Nottingham	9,685,797
University of Oxford	8,769,293
Queen Mary, University of London	7,282,125
University of Liverpool	6,420,263
Loughborough University	5,965,970
University of Bristol	5,607,884
London School of Hygiene & Tropical Medicine	4,980,410
University of Plymouth	4,868,489
Brunel University	4,542,356
University of Kent	3,779,827



Research at Loughborough

New building to receive royal opening

Her Royal Highness the Princess Royal will visit the University on Tuesday 12 May to formally open the state-of-the-art Clyde Williams building in the East Park of campus.

The official opening will also celebrate the launch of the new School of Sport, Exercise and Human Sciences (currently the School of Sport and Exercise Sciences and the biological and psychological components of Human Sciences), which will be active from the start of the 2009/10 academic year.

The new school will strengthen research and innovation in both departments, bringing academics in related areas of research together, while students will benefit from having access to new and exciting module choices.

The ergonomics group, currently part of Human Sciences, is set to form part of a new and vibrant School of Design from the start of the 2010/11 academic year and formal celebrations will occur at that time.



University chef Terry Brookes, Emma Lovegrove from Rainbows and University Vice Chancellor Professor Shirley Pearce.

Charities benefit from the University's staff survey

Loughborough University has donated a total of £2,035 to three charities, following its first-ever campus-wide staff survey.

The survey was undertaken last summer, and as an added incentive for staff to participate, the University agreed to donate £1 to charity for each completed survey.

Every member of staff who took part was asked to specify which of the three chosen charities they would like to support. As a result £1,000 has been presented to Rainbows Children's Hospice, £635 has been given to the British Heart Foundation, and £400 has been donated to Raindrops for Life.

Over 65% of Loughborough's 3,100 staff took part in the survey – one of highest percentage response rates in the higher education sector that the independent consultancy, who managed the process on behalf of the University, had ever had.

An amazing 95% of staff who took part in the survey said the University is a good place to work. Eighty six percent of those surveyed said they would recommend the University as a place to study and 80% would recommend it as a place to work.

Staff survey update – Faculty of Science

The Dean of Science, Professor Ken Parsons, and the Faculty HR Advisor, Anne Lamb, gave presentations to an invited audience of all staff in each Department in the Faculty, eligible to complete the staff survey questionnaire. Presentations were given to the School of Mathematics, the Departments of Physics, Chemistry, Human Sciences, Information Science, Computer Science, Materials, ESRI and to the Applied Vision Research Group. The sessions were well attended and a majority of staff were therefore available to receive feedback and provide views. The survey results were presented and feedback was provided by staff in terms of the context of the Department. Other views and issues were also provided by staff. Anne Lamb provided a report on each presentation and this was sent to the University Staff survey group where an overall report was produced and led to university actions. So that we did not miss specific points, and as a cross check, the Faculty produced an action list of the three most important issues for each Department. This will be checked to ensure something is being done in those areas. In addition, the feedback has been used by Heads of Department when they produced their development plans.

As with the university response, the responses in the Faculty were generally positive, at the level of the Department however there were issues and we feel that we have captured those and have mechanisms in place to ensure that they are acted upon.

WEDC artist scoops top Leicestershire award

Rod Shaw, WEDC's Publications Manager, has been awarded the title of Leicestershire Artist of the Year for 2009, which is organised by the Ferrer's Gallery, Staunton Harold, in association with Leicestershire Magazine.

Born in South Yorkshire in 1962, Rod Shaw was educated at Loughborough Grammar School before studying Art and Design (Foundation) at Loughborough College of Art and Design (now LUSAD), then Fine Art at The University of Newcastle-upon-Tyne during the 1980s. He has exhibited work in a variety of venues from Settle in North Yorkshire to Covent Garden in London.

Rod has developed his painting alongside his work as an illustrator, graphic designer and publishing manager at WEDC, the University's Water Engineering Development Centre. Here, he has published 'Drawing Water' a resource book of water and sanitation illustrations and is currently working on a further volume concerning rescue, health and care in emergencies for the International Federation of Red Cross and Red Crescent Societies.

By contrast, Rod's paintings reflect and communicate the beauty of the natural world and especially the ever-changing effects of light and weather on landscapes. The recent finalists' exhibition for the Leicestershire Artist of the Year award, held in January and February, showcased some of his most recent work. He now looks forward to a solo exhibition of paintings at the Ferrer's Gallery in 2010 while plans are in hand to exhibit on campus his graphic illustrations produced for the Red Cross and Red Crescent Societies later in the year.

A Rod Shaw original.





The crocuses on campus.

Spring has arrived on campus

After the snow in February, it's great to see that spring finally seems to have arrived at Loughborough University!

Thanks to Margaret Rose, from Imago, for this image of the beautiful crocuses on campus.

If you have any images which you feel paint a great picture of Loughborough University, please email them to J.P.Lumani@lboro.ac.uk

Latest Centenary lecture

Following the success of the lectures by Sir Christopher Frayling and Professor Marcus du Sautoy, the Centenary lecture series continues on Tuesday 28 April, with 'The campus is dead: Long live the campus' by Professor Peter Jamieson from the University of Melbourne.

As higher fees, challenging financial circumstances and the pervasive role of IT mean many students spend less time on campus, Peter Jamieson will consider what it means 'to learn' on the university campus in the 21st century. In his lecture he will reflect on our understanding of the university campus as a learning environment and present examples of what some institutions are doing to rethink the nature of both formal and informal learning environments.

Professor Jamieson is also going to run a workshop on the 29 April for University staff across academic departments and support services. This workshop will help us to develop our own strategy in relation to learning spaces and will look at how we can create better spaces to enable a range of learning and teaching to take place, in addition to better spaces to enable interactions to take place. We will also look at how we are going to put in place appropriate consultation and opportunities for conversations and decisions with regard to learning spaces at the University. To attend the workshop please contact Anne Mumford (a.m.mumford@lboro.ac.uk).

Looking further ahead, the University will be holding lectures by Sir Jonathon Porritt (24 June) and Professor Richard Sennett (29 June).

Further details of these and other lectures in the series can be found on the Centenary website at www.lboro.ac.uk/centenary. All of the Centenary lectures are free of charge but admission is by ticket only. Please apply online using the booking form on the Centenary web site. Tickets will be sent out ten days prior to the lecture.

Hard Rain: Centenary Exhibition and Talk

As part of both the Centenary celebrations and the University's sustainability strategy, we are delighted to be hosting the Hard Rain exhibition which is an outdoor exhibition showing the impact of climate change through the lens of photographer Mark Edwards. The exhibition will be at the University for the Centenary Open Day on 14 June and will remain on campus for the remainder of June. Mark Edwards will give a presentation about his experiences and photography on Wednesday 3 June at 12.15. Admission is by ticket only and you should apply via the Centenary website. For information about Hard Rain see www.hardrainproject.com/home.htm. Blackwell's bookshop on campus are arranging a book and poster sale and Mark will do a book signing following the talk.

Olympics Minister praises University sports set-up

Olympics Minister Tessa Jowell visited Loughborough University on 5 March to see the work being carried out to support Britain's athletes and sports governing bodies and the efforts to attract a major international team in the run up to the London Olympics.

Ms Jowell visited the University's world class sports facilities, state-of-the-art sports science laboratories and internationally renowned Sports Technology Institute, before meeting with a group of 2012 hopefuls and their coaches.

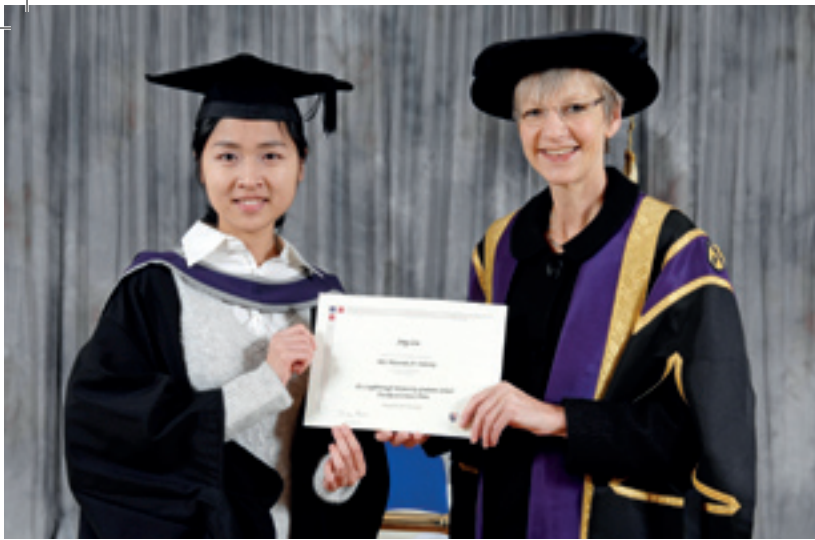
Loughborough University Vice Chancellor Professor Shirley Pearce was able to outline the developments taking place on campus to help support national sporting governing bodies and their athletes, and highlight the work being undertaken to attract a major international team to Loughborough ahead of the London Olympics.

"The University is working very closely with a range of national governing bodies and sports organisations including UK Sport, Sport England and the English Institute of Sport to provide a world class support system to our athletes to ensure they have the best chance of success in 2012," said Professor Pearce.

"We are also working with *emda* and facilities in the region to develop a training package to attract a top overseas team to base themselves here in the run-up to the Games."

Ms Jowell added: "Loughborough University is one of the world's best sporting facilities providing innovative and cutting edge training and expertise for some of the world's best athletes.

"As a potential pre-Games training camp for countries preparing for the Games, the University and the town will be able to experience the spirit of the Olympics and Paralympics on their doorsteps giving local people and students the chance to share in the magic of 2012 while also benefiting from the business and sporting opportunities it will create."



Jing Liu with the Vice Chancellor.

Loughborough University Development Trust Prizes

In 2008, funding by the Loughborough University Development Trust made it possible for the University to award 25 undergraduate prizes and two postgraduate prizes in recognition of exceptional achievements and efforts.

The Trust now funds over 30 undergraduate prizes within departments ranging in value from £50 to £100 and up to three postgraduate prizes each of £400. In December, Jing Liu from the Department of Materials and Alexandra Craven from the Department of Social Sciences received Loughborough University Graduate School Prizes funded by the Trust. The Vice Chancellor, Professor Shirley Pearce, presented the students with cheques for £400 and prize certificates.

The Loughborough University Development Trust exists to support the University in giving students an outstanding quality of educational experience. It raises funds from former students and other friends of the University.

Alumni Careers Mentors

The Careers Centre is re-launching its Alumni Careers Mentors database which now holds around 250 alumni contacts who are willing to share their employment experience to support the career planning of current students, Loughborough University graduates and staff. The support can be by email, telephone, group talks or involvement in Careers Centre activities, or by offering work experience opportunities, including placements.

The database now provides an online search by employment category, company name and degree subject. The search results produce an outline list of Loughborough University graduates and a few details about their occupation. Many of the alumni have also provided a brief career profile, giving information about their job role and advice on how to secure similar employment. Full contact information is only provided through personal or email

contact with the Careers Centre. For further information, please visit the Information for Alumni page on our website: www.lboro.ac.uk/service/careers/section/alumni/alumni.html or contact the Careers Centre on (01509) 892039.

We are always looking to increase our alumni contacts. If you are an alumnus or you know of a fellow Loughborough graduate who would like to become a careers mentor, the online form is available on the Careers Centre website or at: www.careers.lboro.ac.uk/careers_mentors

University seeks nominations for student community awards

Loughborough University's annual community students awards ceremony is set to take place in May and the University is once more asking for community representatives to put forward nominations.

Two awards are traditionally presented to students for their community activity. They provide the opportunity for the University to say 'well done' and 'thank you' for the efforts of students, who often make a tremendous contribution to the work of a range of local charitable organisations as well as families and individuals.

The first award, The TS Shipman Prize, is for students of the University or College who are considered to have contributed most to the development of co-operation and aid between the University or College and the local community. This award may, for example, recognise a student who has worked on a voluntary basis for a charity, school or community group. Last year this award went to Ryan Storr and Scott Ferry for their contributions to the work of the Community Action section of the Students' Union.

The second award, The Hannah Community Prize, seeks to recognise students for showing acts of kindness, general good neighbourliness or making a contribution to local community life. Last year first prize was presented to Stefan Carney for his support given to an individual member of the community, his voluntary work within the community and for his involvement with a residents group.

The ceremony in May will be held at the Town Hall with the University's Vice Chancellor, Shirley Pearce, presenting the awards. The Mayor and other local dignitaries will also be present. Adrian Bailey, the University's Community Warden for the Storer Road and Burleigh Road area of Loughborough, is part of the judging panel for the awards. He comments:

"Students contribute in many ways to the community and we don't always get to hear about their efforts. We basically want to hear from anyone who knows about students who deserve some recognition for their work. This could be volunteering for a particular organisation or charity, general work in the community or even a student or group of students who are simply good neighbours."

Application forms are available from Dawn Schubert on telephone 01509 222487 or by email: d.schubert@lboro.ac.uk. The deadline for applications is 24 April.



Professor John Arnold with Professor Hongyong Yuan from the Centre for Public Safety Research, Tsinghua University, China.

Chinese officials visit Business School

Delegates from the prestigious Centre for Public Safety Research (CPSR) at Tsinghua University, China, visited Loughborough University on 18 February to give a presentation at the Business School on the subject of emergency response research in their home country, linked to both man-made and natural disasters.

Funded by the Chinese government, the CPSR have been working to develop and build a national Emergency Response Platform System for China. The emergency response platform is an integrated system used for efficient emergency management, planning and logistics, and supporting decision making. It can also be used for integrated risk analysis, hazard mitigation, and training.

The presentation also elaborated on the implementation of CPSR's emergency information system in response to the Sichuan Earthquake, as well as its application at Olympic venues during the Beijing 2008 Olympic Games, topics that were of particular interest to those concerned with Risk Management who attended.

International and regional exchange and cooperation undoubtedly play an important role to enhancing emergency management research. This visit is part of a collaboration supported by the British Council between the Business School and Tsinghua University that has existed for a number of years, having been nurtured by the Business School's Dr Lili Yang.

After presenting to the Department of Communities and Local Government at the start of the week, the same delegation went on to visit the Systems Engineering Innovation Centre (SEIC), the Water, Engineering and Development Centre (WEDC), Computer Science, and the Ergonomics & Safety Research Institute (ESRI) on campus, as well giving presentations to various businesses and regional fire brigades.

The delegates also met Chris Backhouse, Director of International Strategy at the University, and Professor Peter Golding, Pro Vice Chancellor for Research at the University, during their visit.

John Arnold, Director of Research at the Business School commented: "The visit from CPSR organised by Dr Lili Yang represents quite a coup for the University as there is enormous potential for some really exciting international research collaborations with a wide variety of departments across campus."

Confide

The University has a support network called Confide for staff and students who feel that they are being harassed or bullied. The current membership consists of:

Name	Department	Ext.	Email
Anne Lamb	Personnel Services	2168	A.E.P.Lamb@lboro.ac.uk
Mary Morley	Library	2340	M.D.Morley@lboro.ac.uk
Marina Pickles	Intellectual Property	8496	M.Pickles@lboro.ac.uk
Shirley Horner	Information Science	3075	S.M.Horner@lboro.ac.uk
Heather Rees	Information Science	3077	H.L.Rees@lboro.ac.uk
Jayshree Lakha	Civil & Building Engineering	2601	J.Lakha@lboro.ac.uk
Anne Goulding	Information Science	3056	A.Goulding@lboro.ac.uk
Xujin Bao	IPTME	3150	X.Bao@lboro.ac.uk
Bill Overton	English and Drama	2953	W.J.Overton@lboro.ac.uk
Ruth Lister	Social Sciences	3350	M.R.Lister@lboro.ac.uk
Kevin Walmsley	Estates Services	2123	K.Walmsley@lboro.ac.uk
Neil Burns	Wolfson School	7612	N.D.Burns@lboro.ac.uk
Jane McCormack	Engineering Faculty	7508	J.A.McCormack@lboro.ac.uk
Elaine Beaken	Personnel Services	2171	E.Beaken@lboro.ac.uk
Marc Gibson	CIS	2696	M.A.Gibson@lboro.ac.uk

These people are available to talk to any member of staff or student in confidence and will offer support, advice and assistance in seeking a satisfactory solution. They are willing to discuss any incidents or problems, no matter how serious or trivial they may seem.

Further information can be found at: www.lboro.ac.uk/confide. If you do not have access to a computer and require further information, please contact Anne Lamb on ext 2168.

research@lboro



The Working Late research team.

Loughborough University responds to the ageing workforce

Researchers at Loughborough University have been awarded £1.3million from the New Dynamics of Ageing Programme.

The research, which is led by Professor Cheryl Haslam, Director of the University's Work and Health Research Centre in the Department of Human Sciences, is called 'Working Late – strategies to enhance productive and healthy environments for the older workforce.' It centres on how there is a pressing need for employment policies, workplace design and occupational health provision that takes account of the ageing workforce.

In the UK and elsewhere in Europe, there are now twice as many workers aged 50 and over than those aged 25 years or younger.

Speaking about the award, Professor Haslam said: "We are delighted to secure this funding for a four-year integrated programme of research. The Working Late research programme will develop workplace health interventions and design solutions that will enable people to work longer and improve the quality of working life for older people."

The Loughborough Working Late research team comprises partners from Loughborough University; Birmingham University; University of the West of England; Institute of Occupational Medicine, Edinburgh; Royal Society for the encouragement of Arts, Manufactures and Commerce; The Age and Employment Network; COPE Occupational Health Services. The research also benefits from the involvement of expert advisory groups: The Institute of Employment Studies; Transport Research Laboratory; British Occupational Health Research Foundation and Department for Work and Pensions.

The multidisciplinary research, which is funded by five councils, will adopt a mixed method research approach of focus groups, interviews, surveys and interventions. The defining feature of the research programme will be engagement with agencies, employers and older workers to guide the research process and disseminate the findings. This major research initiative will ultimately contribute to improved working conditions and support

services, allowing freedom of access to work and improved quality of working life of older people.

The research team are Professor Cheryl Haslam, Dr Diane Gyi, Professor Kevin Morgan, Dr Stacy Clemes, Dr Hilary McDermott, Dr Martin Lindley, Dr Fehmidah Munir, Professor Roger Haslam, Mr Aadil Kazi, Dr Kate Threapleton, Mrs Beejal Parmar (Human Sciences); Mrs Colette Nicolle, Mrs Lucy Rackliffe, Dr Martin Maguire (ESRI); Professor Alistair Gibb (Civil Engineering); Professor Laurie Cohen (Business School); Dr Joanne Crawford (Institute of Occupational Medicine, Edinburgh); Dr Michael Clark (University of the West of England) and Dr Jo Duberley (University of Birmingham).

Personal Data Research Award

A team of researchers led by Professor Charles Oppenheim (Department of Information Science) and including Dr Adam Warren (Department of Geography) have been awarded a 'Runner's Up' prize at the 12th Personal Data Research Award.

The team also comprised experts from Bristol University, University of Victoria (Canada), Linden Consulting (Canada) and Xamax Consultancy (Australia). The €1500 award is for their research into Privacy Impact Assessments (PIAs). The project was funded by the UK Information Commissioner's Office and ran from 9 July to 31 October 2007. It resulted in two deliverables:

A study into the use PIAs around the world;

An online PIA Handbook:
www.ico.gov.uk/upload/documents/pia_handbook_html/html/1-intro.html

Following the project's completion, PIAs have become mandatory for all UK government departments. The handbook produced by the team was mentioned recently in a House of Lords report 'Surveillance: Citizens and the State'. The deliverables have also attracted attention from overseas, with authorities in the Netherlands, Norway and Mexico all expressing an interest the project team's work.

This competition was run by the Spanish Data Protection Agency and was open to international entrants.

Research grants and contracts

awarded in February

Aeronautical & Automotive Engineering

Temperature Probe Simulation/Investigation of Impingement Systems for Turbine Casing Cooling
Dr S J Thorpe
£26,000 Rolls-Royce Plc – PROJECT EXTENSION

Business School

The Choice of Syndicated Loans over Bilateral Lending: The Case of Participant Banks
Dr A Kara
£6,412 The Nuffield Foundation

Chemical Engineering

Demonstration of Spray Freeze Drying for the Manufacture of Food Ingredients and Products
Dr A Stapley and Prof C Rielly
£113,773 DEFRA

Civil & Building Engineering

Devise a Method of Project Control and Reporting Based on Lean Construction Techniques
DR C Pasquire, Prof S Emmitt, Prof A Gibb and Prof A Dainty
£144,147 Sandwood D & B Ltd/KTP

Develop Know-How to Improve Energy Efficiency and Air Quality in Buildings using Natural Ventilation and Intelligent Control Systems
Dr M Cook, Dr S Firth and Prof K Lomas
£110,783 SE Controls Ltd/KTP

Prevention through Design Focus Groups
Prof A Gibb
£39,830 National Institute of Occupational Safety and Health

REEB SIG
Dr T Hassan
£6,000 Labein-Tecnia, Spain

Electronic & Electrical Engineering

Modelling Approaches to Capability Provision
Prof D Parish
£27,861 BAE Systems

Geography

Foresight into Freshwater Ecology
Dr P Wood
£1,465 Environment Agency

Information Science

Applying Bibliometric Methods to Investigate Scholarly Communication with Particular Focus on Economics (Post-Doctoral Fellowship)
Prof C Oppenheim
£63,686 ESRC

Department of Materials

Corrosion Fatigue Interactions of High Temperature Nickel Alloys
Prof R Thomson and Dr G West
£67,443 Rolls-Royce Plc

Processing and Microstructural Control of Ferritic Steels for Fusion
Prof R Faulkner and Dr H Wu
£12,000 The Royal Society

Assessing the Environmental Impact of Oxy-Degradable Plastics across their Life Cycle
Dr N Thomas and Dr J Clarke
£29,818 DEFRA

FEMaS-CA – Grant Agreement No. 224752
Prof R Faulkner and Dr H Wu
£39,882 European Commission

Mathematical Sciences

Modelling Hormonal and Stress Regulation on Myoma Growth and Development
Dr J Ward
£11,000 The Royal Society

PERFORM 60

Prof R Smith and Dr S Kenny
£50,000 European Commission

Mechanical & Manufacturing Engineering

Large-Scale Human Placenta Progenitor Cell-Derived Erythrocyte Production – Continuous Red Blood Cell Production
Dr R Thomas and Prof D Williams
£77,809 Celgene Cellular Therapeutics

School of Sport & Exercise Sciences

Evaluation of Fitter for Walking, Step Up and Walking Works
Dr E Adams and Prof F Bull
£162,003 Living Streets

Evaluation of Active Schools : Phase 2
Dr R Jeanes and Dr T Kay
£28,000 Sportscotland

Participation, high level performance and competitive pathways for young people with a disability: evaluation of the Youth Sport Trust
Dr M E Nevill and Prof B M J Houlihan
£10,000 Youth Sport Trust

Personal and social responsibility for young people through sport: evaluation of the Youth Sport Trust Deutsche Bank Project
Prof K Armour
£11,000 Youth Sport Trust

Effects of sports volunteering on the personal and social development of young people.
Dr T A Kay
£22,000 Youth Sport Trust

Impact of a school-based intervention (Power packs) to raise activity in 5-7 year olds
Dr M E Nevill
£6,000 Youth Sport Trust

Investigating the Capacity of Swimming Clubs
Dr L Robinson
£2,100 Amateur Swimming Association

Expert Support to Assess the Lessons from the Delivery of other Olympic Games and Comparable Events
Prof I Henry
£7,200 pmpLEGACY

Social Sciences

Predictive Overlap and Mutual Dependency in Criminological Outcomes: A Statistical Assessment of Reciprocal Relationships in BCS Data - 2001-2008
Dr P Kautt
£77,659 ESRC

Process and Impact Evaluation of Accessibility Planning
D Smith and Prof A P France
£662,965 Atkins Transport Planning



(l-r): Rich Buswell, Anna Chalkley and Tracey Miles with their prizes.

It's Better OFF

The 'It's Better Off' campaign launched in February and following a great deal of interest from across the campus, over 150 members of staff have now joined as Environmental Champions.

These champions will be helping to spread the word about the campaign and assisting with implementing new and existing initiatives across the University. We will be starting training sessions at the end of March for the first candidates.

Remember that it's not too late to register to become an Environmental Champion. For more information on how to get involved, as well as tips on how you can help, log on to www.lboro.ac.uk/saveenergy

A big thank you to everyone who completed the 'It's Better Off' survey – the Sustainability team had a fantastic response, with 700 questionnaires returned. This has provided some useful data and comments to work with. The Sustainability team will be incorporating your comments into the campaign and will feedback to you on some of the issues that you raised at the earliest opportunity.

The lucky winners of the wind-up DAB Radios in the Environmental awareness staff survey were: Rich Buswell, Tracey Mills and Anna Chalkey. The runners up were: Abbie Bartholomew, Sam Allen, Linda Mattison, Taufiq Widjanarko and L. Moriarty. They have all received environmentally friendly prizes.

Keep your eyes open for upcoming 'It's Better Off' events in your area of campus. If you would like to get involved as an Environmental Champion or would like further information about the campaign please email environment@lboro.ac.uk

Travel survey winners

Thanks to everyone who completed the staff and student travel survey at the end of 2008. Our winners will receive £50 of high street vouchers.

Staff winners

Di Bass
Nigel Bilsborough

Student winners

Ernie Arrowsmith
Matthew Dent

The survey provided some valuable comments, which the Transport Sustainability Group will be taking on board as they progress with the review of the University Travel Plan.

The current plan can be read at the following link: www.lboro.ac.uk/service/fm/Downloads/sustainability/LUgravplan.pdf

A snap shot of survey comments and responses are as follows:

You said	We say
"Campus bus service is very good during weekdays in term time – outside these times then the service is poor to/from station/town centre."	"We are aware this is an issue and are looking into the possibility of increasing the service both in term time and out of term time."
"Clampdown on speeding, hardly anyone sticks to the 15mph limit and I've had many close shaves on my bicycle."	"We have just invested in some illuminated speed signs that will measure how fast you are driving and hopefully slow people down"
"The cycle to work scheme offering cheaper bikes is only for staff with three year contracts or more."	"This is not true, the scheme is open to all University employees providing that they are on a contract of two years or more in length and that they have completed six months service."
"I would like to see far more Sheffield stands for secure cycle storage on campus. The V-shaped clamps on walls are totally inadequate."	"We now have a policy to only install this type of stand and are currently reviewing areas that require additional stands installing."
"Before encouraging more people to walk and cycle, the infrastructure for these modes of transport needs to be greatly improved. The current volume means people resort to walking in the middle of the roads since the pavements are so busy, which is highly dangerous for all concerned."	"Facilities Management are working on a Landscape Strategy that takes in the whole campus. Included in this will be the need to consider and improve pedestrian, cycle and jogging routes on the site."
"My biggest worry is my bike being stolen."	"Security loan D locks out for £10 per year."

Further information on the Green Travel Guide can be found at www.lboro.ac.uk/service/fm/sustainability/travel/index.html

(l-r): Jo Hasbury (Sustainability Manager); Nigel Bilsborough; Ernie Arrowsmith and Matthew Dent



Obituaries

Keith Pugh

Keith Pugh, for nearly 25 years the University's principal photographer for the former Audio Visual Services, died recently at the age of 61 after a long illness.

Keith gained a degree in photography at the Ealing School of Photography and joined AVS in 1974 where he helped develop and fully establish a photographic service at the University which became the equal to any university in the country. He was offered and took early retirement in 1999.

By his talent and force of personality he produced an outstanding range of promotional and educational photography.

In collaboration with Frank Shaw from the Civil Engineering Department he photographed and produced over 20 tape/slide training programmes on surveying which became virtually a standard teaching aid on surveying in Africa and many third world countries.

He massively enhanced the standard and creativity of the promotional photographs used in university publications and along with his assistants, Elaine Gant, Jackie Topham, Angela Hamilton, Susan Barber, and later Jagjit Samra and Phil Wilson, he took on board the need to build up a clientele from outside the University eventually working with a very wide range of clients such as 3M, the British Council, Campbell Soups, British Gas, etc.

In 1988 he and the University were awarded a prize in the first ever Castrol 'Picturing Industry' competition, receiving his prize from Richard Branson.

Always meticulous in his work, he was in his element illustrating complicated scientific equipment and instruments, and by his imagination and skills he brought to life what would otherwise have been complex and perplexing objects.

Always popular and through the nature of his work throughout the university, widely known and respected, he was often to be seen driving the unit's old blue Vauxhall van laden with cameras, tripods and lighting packs around the campus.

Dressed in his trade mark tank tops and corduroy trousers he always had a cheery word for any one. He will be missed, but he leaves behind an impressive legacy of photographic work which will always be available to show and chart the University's progress.

Our sympathies are extended to Kath his partner and Emily and Dominic his children.

Michael Frost

Pamela Denton

Many past and present staff and students were saddened to hear of the death of Pam Denton in August last year. She was a Senior Secretary in the Materials Engineering Department, subsequently IPTME, for 25 years prior to her early retirement in March 1996.

Pam joined Loughborough soon after it received its charter as a University and working with Professor Ian Menzies became totally committed to the establishment of what was then the new department of Materials Engineering. At that time few departments had administrators so Pam's role was truly multifunctional acting as she did as Head's Secretary, Finance Clerk, Departmental Secretary and Office Manager. Pam's professional work over that time was outstanding in every way and she was meticulous in the presentation and marketing of courses, conferences, open days, and

student social and study activities. The standards she set were the guidelines which many have since sought to follow, and it has to be remembered, in her early days at Loughborough the delete and paste keys had not been invented and spell checking was done with the aid of a hard back dictionary.

Pam was truly committed to her job and took a genuine personal interest in the welfare of both staff and students. If she was called on to work extra hours or at weekends to get a task completed that is what she did. In her spare time she turned her skills to embroidery and smocking making beautiful cloths for the children of colleagues, and in more recent years her artistic skills were embodied in the production of intricate Christmas cards when again she did not forget friends at the University. Many at the West End of campus will also remember Pam for her dog, Joseph, which accompanied her to work, obviously again before rules that banned such activities.

Pam Denton was certainly part of the early Loughborough University community, she took pride in seeing how new staff and students progressed, and will be remembered with affection by many.

John Harper
Materials Department

Janet Redman

Friends and colleagues are sorry to report the death, on 29 January 2009, following a painful illness, of Janet Redman.

Janet joined the technical team in the Department of Mechanical Engineering in August 1978 as an Assistant Draughtswoman working in the Departmental Drawing Office under the leadership of Peter LeGood. Janet had trained as a Tracer at Brush Electrical and been a Detail Draughtswoman with Fisons before joining the University. In 1985 she temporarily took over the leadership role for eight months during Peter's absence and consolidated her position in October 1995, becoming the sole provider of technical drawing services.

From August 1997, upon the creation of the Wolfson School of Mechanical and Manufacturing Engineering, she took on an advisory and supportive role in the newly formed School Audiovisual Support Unit, working alongside Vince Scothern; a role in which she continued until she retired in December 2007.

Janet was a strong-minded and very private person. She was a genuine countrywoman with a love of open air pursuits; she loved horse riding, walking with her dogs and caravanning. She liked to do things well and thus expended time and effort to polish her skills in her chosen pursuits. A typical example is her membership of a gun club, which she would regularly attend with her husband, Brian, where she would often score 24/25 in Clay Pigeon competitions.

She was very involved with her family, adoring her son, daughter-in-law and her two grandchildren. In recent years she developed a passion for Genealogy and was excited to learn many fascinating things about her ancestry. As was normal for Janet, she was happy to pass on knowledge to others of how to pursue such searches of their own. Her former colleagues will remember her fondly.

R M Parkin

Andrew Milne

Andrew Milne (Chemical Engineering) passed away on 18 February 2009. He joined the University in 1967 and retired in July 2004. During his working life he was Union Secretary and Union Chairman of the ASTMS.



Students take part in the practical chemical problem solving exercise.

Top of the Bench

Loughborough University hosted a prestigious national competition on Saturday, 28 March, aimed at increasing the participation of children in chemistry.

The national finals of 'Top of the Bench', which is run by the Royal Society of Chemistry for 14-16 year-olds, is one of the core educational events taking place within this year's iFestival, the innovation festival funded and organised by *emda*.

The competition was comprised of two events: a short test of factual chemical knowledge and a two-hour practical chemical problem solving team exercise. The Top of the Bench 2009 trophy went to Bootham School, York with runners up Nottingham High School and in third place, Winchester College. The Jacqui Clee Award for an individual outstanding performance went to Jon Evans (Year 10 student) from St Bees School (Cumbria).

New community 'sub'

Loughborough University's pioneering Community Warden team has the welcome addition of a new 'sub'.

Faye Powell has been appointed to the role of sub warden for the Storer and Burleigh area. She follows in the footsteps of successful sub warden Kate Sang, who relinquished her duties in order to concentrate on other professional commitments. The role of the sub warden for the Storer and Burleigh area is to assist the community warden in liaising with students and permanent residents of the area in order to promote good relationships between the groups. For students they offer support, advice and information and respond to any incidents or disciplinary issues that may arise. For residents they provide a point of contact to ask questions or raise concerns.

Faye is a PhD student working in the Department of Human Sciences, within the University's Centre for Research into Eating Disorders. She has been at Loughborough since 2005, where she joined the same department as an undergraduate. The full team of community wardens at the University is now:

- Adrian Bailey** – community warden, Storer and Burleigh area
- Faye Powell** – sub warden, Storer and Burleigh area
- Louise Doherty** – deputy community warden, Herrick and Kingfisher area
- Jayshree Lakha** – deputy community warden, Ashby Road Estate area.

New Student Outreach and Recruitment Team (SOAR!)

A new Student Outreach and Recruitment Team has been formed by the merger of the current schools liaison and widening participation central resources.

The team will offer an integrated service to schools, colleges and community groups working across the full range of recruitment activities. By coming together in this way the new team will be able to share expertise, experience and knowledge to focus on some key University objectives, including:

- Recruiting students of the highest quality with the best potential to succeed, regardless of background
- Securing existing markets and developing new ones
- Targeting key schools and colleges to work with
- Developing an enhanced and integrated database bringing together data in an accessible format for school profiling
- Analysing application and admissions data relating to HEFCE Performance Indicators and the milestones set out in the Access Agreement and the WP Strategic Assessment
- Continuing to use the strengths of the University, across all academic departments, to promote higher education locally, nationally and regionally

For those of you interested in working with schools, raising awareness of your subject area, or your particular course, SOAR would be happy to hear from you to discuss what can be achieved together.

If you have any queries about the new team, please contact Justine Sanders, Student Outreach and Recruitment Manager, J.Sanders@lboro.ac.uk, extension 2481.

From Loughborough to the big screen

A part-time research student from the department of English and Drama has hit the big screen with a part in the multi-award winning film 'Slumdog Millionaire'.

David Gilliam, who has starred in numerous other films in a career spanning 30 years, plays the role of Clark, an American tourist, in Danny Boyle's blockbuster. On screen, he gives a \$50 note to the central character, Jamal Malik, which enables the latter to answer one of the questions in the Indian version of 'Who Wants to be a Millionaire'.

David is currently writing a thesis at Loughborough University on film and American writing.



Business School launches new website

The Business School has become the first academic department in the University to redevelop its website using the new design templates.

An increasing number of sites have been developed using the new templates in conjunction with the Marketing and Communications department.

Philip Wilkinson-Blake, Director of IT for the Faculty of Social Sciences and Humanities, said: "The Business School is the first academic department to take this step forward, which represents a web development milestone for both the University and the School."

Peter Fountain, Marketing Officer for the Business School added: "This has been a very exciting development for the School. How the University presents itself on the Internet is becoming increasingly important and the website is vital in communicating effectively with our many different audiences.

"I would recommend that other departments contact the Marketing and Communications team to see how they can develop their websites along similar lines."

The Business School website was launched on March 20, and can be visited at www.lboro.ac.uk/businessschool.

University gets prepared for emergencies

Everyone at Loughborough University hopes that we do not have to experience a major incident, but even routine things such as the recent snow disruption or a short electricity cut can have a major impact on what we do, depending on the timing.

To ensure that everyone is well placed to manage incidents, a University project led by Dr Anne Mumford has been set up and people across the campus will be asked to get involved to ensure that we manage incidents well.

"It's really hard to anticipate everything that might happen and so we will be looking at our key activities and the impact of loss of staff, electricity, IT and buildings and how we might manage the situation," said Anne.

Japanese Minister visits University

An important minister from the Japanese embassy visited campus on 6 March as part of Loughborough University's Japan Day celebrations.

Minister Nishigahiro, the Minister Plenipotentiary, was greeted by Vice Chancellor Shirey Pearce before attending a special banquet at Burleigh Court.

"I am delighted that Loughborough University has held a Japan Day celebration as it is very important that we acknowledge the links between the two countries," said Minister Nishigahiro.

"I have been very impressed with the facilities at the University, especially the conference facilities. It is fantastic there is such a great hotel on site.

"I have been reading about the history of Loughborough and I hope that the town has learned something about the Japanese culture through Japan Day. England and Japan have been friends for a long time."

Japan Day, which was open to members of the public, was held on Saturday, 7 March. It was a huge success with many people attending to see or take part in a variety of activities, ranging from kimono dressing and origami, to Shiatsu therapy and Noh theatre (traditional Japanese drama).

Professor Shirley Pearce welcomes Minister Nishigahiro to the University.



news@lboro is published by the Public Relations Office, Rutland Hall, Loughborough University, Loughborough LE11 3TU
T 01509 222224 F 01509 223902 E news@lboro.ac.uk

Editor: Jo Lumani Ext 8697 E J.P.Lumani@lboro.ac.uk

Layout by: Helen McCullam, Public Relations Office

Unless otherwise stated, photos by Design & Print Services
Printed by Design & Print Services

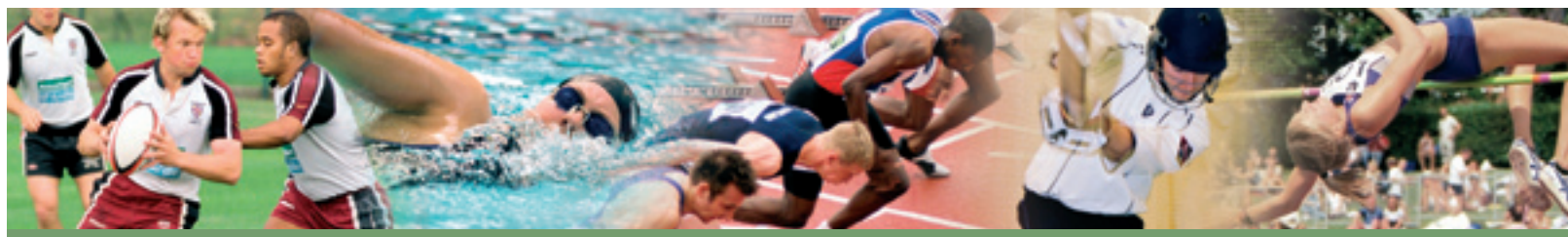
Contributions to **news@lboro** should usually be made on disk or by emailing news@lboro.ac.uk

Due to space restrictions, not all submitted material can be printed. The editor reserves the right to amend or withdraw articles without notice.

Extracts from **news@lboro** should not be reproduced without prior permission from the Public Relations Office.

Issue No 63: Tuesday 26 May 2009
Copy deadline: 5pm Tuesday 12 May 2009

news@lboro is also available online in pdf format at www.lboro.ac.uk/publicrelations/publications/newsatlboro/newsletter62.pdf



It's a Shaw thing as England win women's World Cup

Loughborough's Nicky Shaw was star of the show as she helped England secure its first women's cricket World Cup title for 16 years.

Shaw, who was named Player of the Match, was one of three Loughborough players to feature in the final which saw England's women's take a four-wicket win over New Zealand.

The 27-year-old all-rounder graduated from the University in 2007 with a degree in Criminology and Social Policy, and is now studying for a coaching masters as well as working as assistant coach at the University's Centre of Cricket Excellence.

Shaw had not been in the England XI starting line up for the final, but was brought in following the withdrawal of fast bowler Jenny Gunn. She got England off to a great start, taking four wickets for 34 in nine overs. Then, as New Zealand threatened England's World Cup chances midway through the chase, Shaw hit three boundaries late on to push England past their target of 167, helping them to their first World Cup title since 1993.

"It's almost surreal to win - it's difficult to believe we've done what we've been training for for so long," said an excited Shaw. "The final was an emotional match with lots of ups and downs but winning was the important thing and that's what everyone will remember now.



"Personally I had an average tournament up until the final. It took a lot of courage for Jenny [Gunn] to pull out of such a big match and it was very emotional for me when I found out I'd be replacing her, I'm so glad I got a chance to play.

"I went on trying to prove a point so I didn't really think about the occasion. I wanted to show the world, my coach and myself what I was capable of. It's the best figure I've ever got in 10 years of playing and now I want to keep on improving."

Sports Science with Management student Laura Marsh also took two wickets during the match, ending up as the tournament's top wicket taker, while Lydia Greenway, a Loughborough graduate, scored eight in the final.

The win was a fitting end to the tournament, which England dominated from start to finish, losing only one match (a dead rubber to Australia) along the way. The women's team have now won the World Cup title three times in the competition's 36-year history, eclipsing the men who are yet to taste success in the competition.

"Women athletes don't get enough recognition so it's great the team have got so much media exposure," added Shaw. "I hope our performance will encourage more women and girls into cricket, which in turn will get more people watching the sport.

"The World Twenty20, which is being hosted by England in June, is already sold out, so there'll be a lot of pressure now for us to perform well in our own back yard."

Jackson breaks world record

Loughborough University swimmer Joanne Jackson broke the women's 400m Freestyle world record on March 16 as team mate David Davies set a British best in the same event at the British Gas Swimming Championships 2009.

Olympic bronze medallist Jackson, who like Davies is coached by British Swimming's Kevin Renshaw, was pushed all the way to her gold medal by double Olympic Champion Rebecca Adlington, who trains at the University three times a week.

The women were swimming stroke for stroke throughout the race and it wasn't until the final 100m when Jackson began to put some space between her and Adlington.

The final 25m saw Jackson pull five metres ahead of Adlington and Jackson touched home to rapturous applause as she set a new world record with a time of 4:00.66. She also secured her place on the World Championship squad for Rome this summer.

Davies swam to an emphatic victory in the men's 400m Freestyle with a new British record to also seal his place in Rome. Leading from the first turn, Davies looked strong throughout the race and touched home in a new national best of 3:45.24.